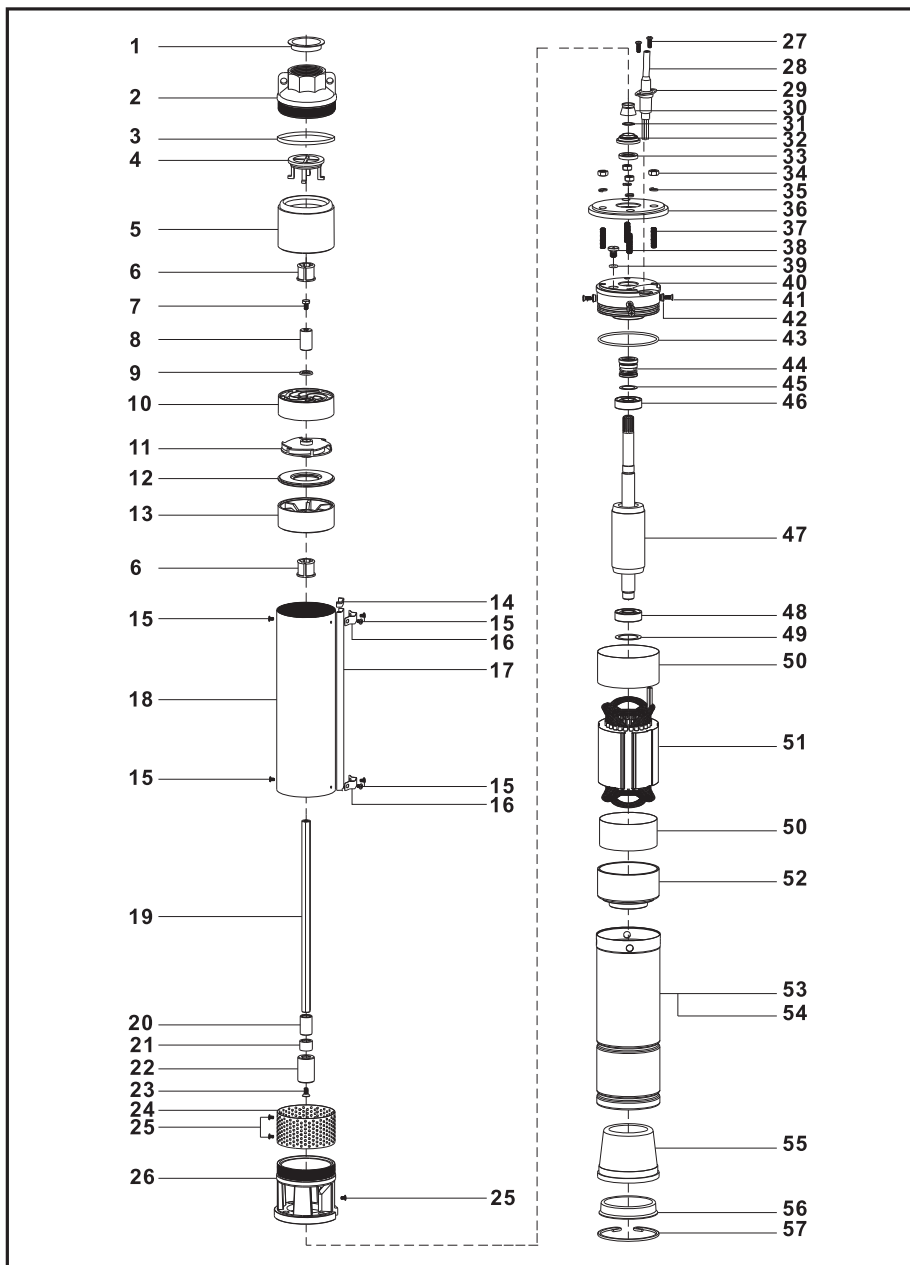


EXPLOSIVE VIEW



PART LIST

| NO | DESCRIPTION | Q'TY | NO | DESCRIPTION | Q'TY |
|----|-------------------------|------|----|--------------------|------|
| 1 | Dust cover | 1 | 30 | Sand proof sleeve | 1 |
| 2 | Outlet joint | 1 | 31 | Gasket | 1 |
| 3 | O-ring | 1 | 32 | Sand proof cushion | 1 |
| 4 | Check valve | 1 | 33 | Skeleton oil seat | 1 |
| 5 | Check valve seat | 1 | 34 | Nut | 4 |
| 6 | Rubber bearing | 2 | 35 | Spring washer | 4 |
| 7 | Screw | 1 | 36 | Cover plate | 1 |
| 8 | Upper bushing | 1 | 37 | Bolt | 4 |
| 9 | Sealing gasket | 1 | 38 | Screw | 1 |
| 10 | Guide vane | 7-30 | 39 | O-ring | 1 |
| 11 | Impeller | 7-30 | 40 | Bearing seat | 1 |
| 12 | Guide vane cover | 7-30 | 41 | Screw | 4 |
| 13 | Middle bearing block | 7-30 | 42 | Locating sleeve | 4 |
| 14 | Cable shield | 1 | 43 | O-ring | 1 |
| 15 | Screw | 6 | 44 | Mechanical seal | 1 |
| 16 | Cable guard plate clamp | 2 | 45 | Washer | 1 |
| 17 | Cable guard plate | 1 | 46 | Bearing | 1 |
| 18 | Pump housing | 1 | 47 | Rotor | 1 |
| 19 | Shaft | 1 | 48 | Bearing | 1 |
| 20 | Under bushing | 1 | 49 | Washer | 1 |
| 21 | Plastic sleeve | 1 | 50 | Bushing | 2 |
| 22 | Coupling | 1 | 51 | Stator | 1 |
| 23 | Screw | 1 | 52 | Bearing seat | 1 |
| 24 | Strainer | 1 | 53 | Motor housing | 1 |
| 25 | Screw | 3 | 54 | Oil | |
| 26 | Inlet joint | 1 | 55 | Rubber cup | 1 |
| 27 | Screw | 2 | 56 | Bottom cover | 1 |
| 28 | Cable | 1 | 57 | Retaining ring | 1 |
| 29 | Cable clamp | 1 | | | |