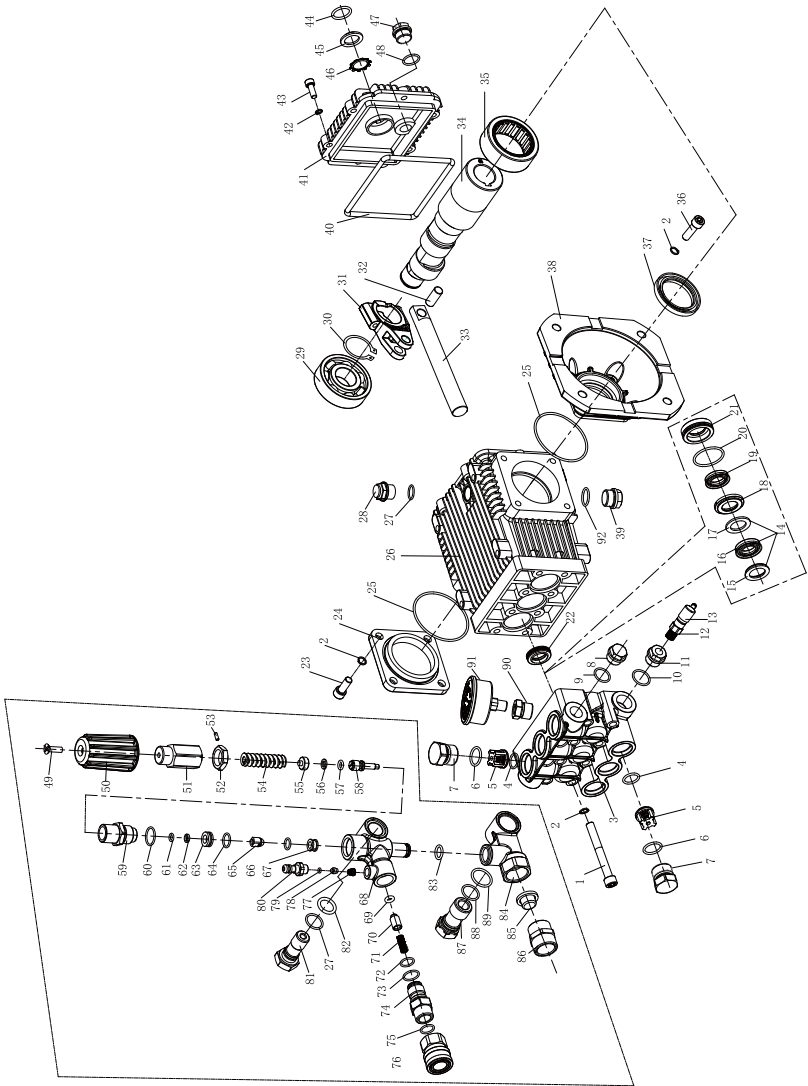


PUMP EXPLOSIVE VIEW OF WD020417500



PUMP PART LIST OF WD020417500

| NO | DESCRIPTION | Q'TY | NO | DESCRIPTION | Q'TY |
|----|----------------------------|------|----|-------------------------------------|------|
| 1 | Bolt | 8 | 41 | Crankcase cover | 1 |
| 2 | Spring washer | 16 | 42 | Spring washer | 6 |
| 3 | Pump head | 1 | 43 | Hexagon socket head screws | 6 |
| 4 | O-ring | 6 | 44 | O-ring | 1 |
| 5 | Check valve assy | 6 | 45 | Oil level indicator | 1 |
| 6 | O-ring | 6 | 46 | Oil window circlip | 1 |
| 7 | Check valve plug | 5 | 47 | Drain plug | 1 |
| 8 | Outlet plug | 1 | 48 | O-ring | 1 |
| 9 | O-ring | 1 | 49 | Countersunk flat head screw | 1 |
| 10 | O-ring | 1 | 50 | Regulating handle | 1 |
| 11 | Inlet plug | 1 | 51 | Regulating bushing | 1 |
| 12 | Termal relief valve | 1 | 52 | Regulating lock nut | 1 |
| 13 | Termal relief valve sheath | 1 | 53 | Hexagon socket set screws | 2 |
| 14 | Water seal assy | 3 | 54 | Spring | 1 |
| 15 | Backup ring | 3 | 55 | Regulating spring lower gasket | 1 |
| 16 | High pressure water seal | 3 | 56 | Differential plunger retaining ring | 1 |
| 17 | Spacer ring | 3 | 57 | O-ring | 1 |
| 18 | Backup ring | 3 | 58 | Differential plunger | 1 |
| 19 | O-ring | 3 | 59 | Valve body | 1 |
| 20 | Low pressure water seal | 3 | 60 | O-ring | 1 |
| 21 | Compression ring | 3 | 61 | O-ring | 1 |
| 22 | Plunger oil seal | 3 | 62 | Plunger O-ring retainer | 1 |
| 23 | Hexagon socket head screw | 4 | 63 | Plunger gasket | 1 |
| 24 | Bearing cover | 1 | 64 | O-ring | 1 |
| 25 | O-ring | 2 | 65 | Bullet | 1 |
| 26 | Crankcase | 1 | 66 | O-ring | 1 |
| 27 | O-ring | 2 | 67 | Seat | 1 |
| 28 | Oil fill plug | 1 | 68 | Outlet connect | 1 |
| 29 | Bearing | 1 | 69 | O-ring | 1 |
| 30 | Circlip | 1 | 70 | Outlet valve head | 1 |
| 31 | Connecting rod | 3 | 71 | Valve head spring | 1 |
| 32 | Plunger pin | 3 | 72 | O-ring | 1 |
| 33 | Plunger | 3 | 73 | O-ring | 1 |
| 34 | Crankshaft | 1 | 74 | Outlet adapter | 1 |
| 35 | Needle bearing | 1 | 75 | O-ring | 1 |
| 36 | Hexagon socket head screws | 4 | 76 | Quick coupling assy | 1 |
| 37 | Crankshaft oil seal | 1 | 77 | Suction spring | 1 |
| 38 | Connecting flange | 1 | 78 | Suction fitting cone valve | 1 |
| 39 | Oil drain plug | 1 | 79 | O-ring | 1 |
| 40 | O-ring | 1 | 80 | Suction fitting | 1 |