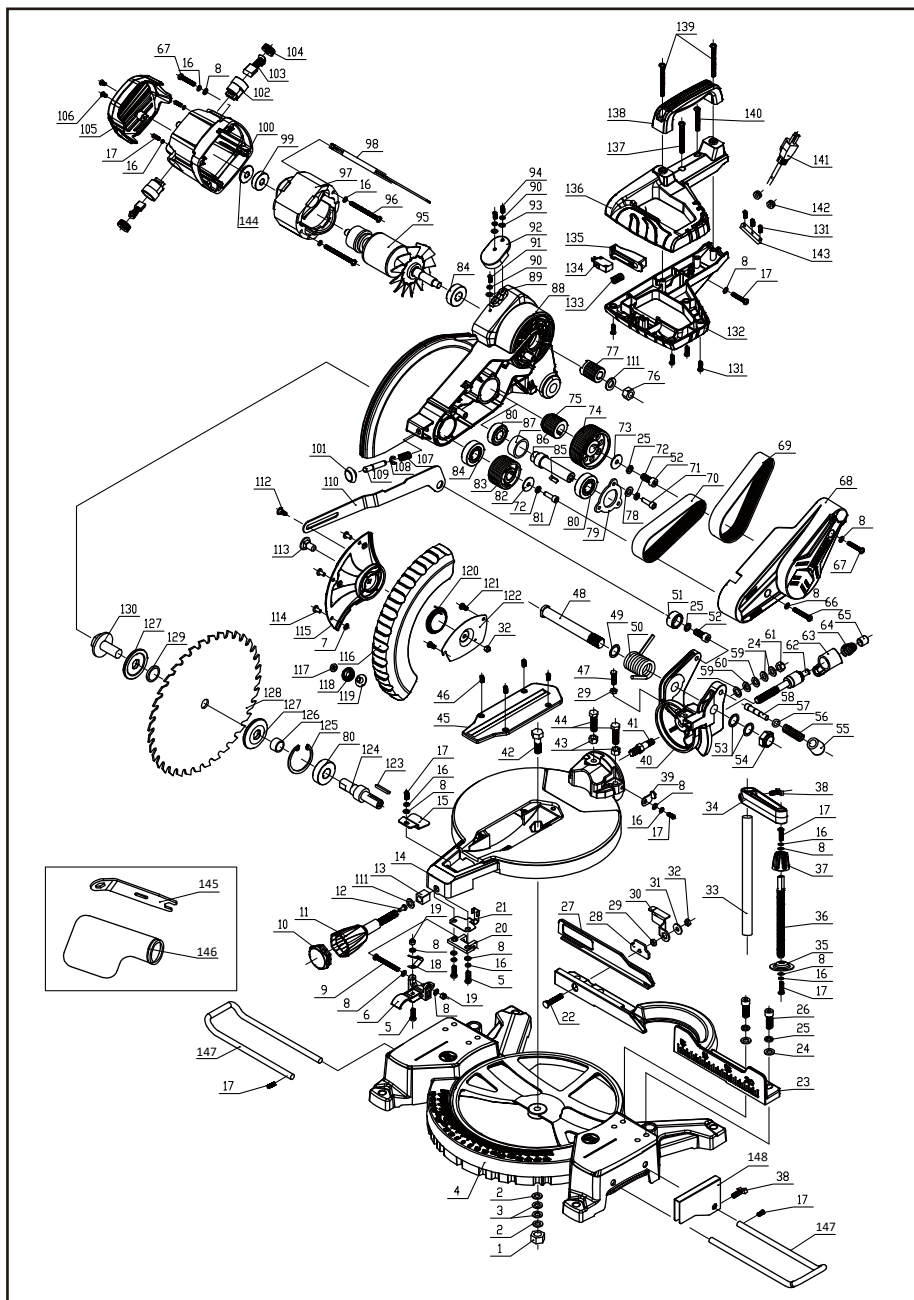


## EXPLOSIVE VIEW OF WD030220254



## PART LIST OF WD030220254

NO	DESCRIPTION	Q'TY	NO	DESCRIPTION	Q'TY
1	Nut	1	41	Screw	1
2	Washer	2	42	Hexagon head bolt	1
3	Corrugated gasket	2	43	Nut	2
4	Base	1	44	Hexagon head bolt	2
5	Screw	3	45	Cutting insert	1
6	Lock on trigger	1	46	Screw	4
7	Washer	3	47	Screw	1
8	Washer	16	48	Pivot shaft	1
9	Screw	1	49	Washer	1
10	Cover of lock handle	1	50	Torsion spring	1
11	Lock handle	1	51	Stop collar	1
12	Plastic washer	1	52	Hexagon socket screw	2
13	Square nut	1	53	Washer	2
14	Turntable	1	54	Locknut	1
15	Angle indicator	1	55	Locking pin cap	1
16	Spring washer	14	56	Locking pin spring	1
17	Screw	9	57	Rubber ring	1
18	Lock trigger leaf spring	1	58	Locking pin	1
19	Hexagon lock nut	2	59	Washer	2
20	Lock on trigger support	1	60	Corrugated gasket	1
21	Angle lock leaf spring	1	61	Nut	1
22	Square neck bolt	1	62	Bolt	1
23	Fence	1	63	Bevel lock lever	1
24	Washer	6	64	Spring	1
25	Spring washer	5	65	Spring cap	1
26	Hexagon socket head screw	4	66	Screw	1
27	Movable fence	1	67	Screw	5
28	Pressure plate for fence	1	68	Cover of belt	1
29	Nut	2	69	Belt	1
30	Lock lever of moveable fence	1	70	Belt	1
31	Washer	1	71	Hexagon socket screw	3
32	Nut	2	72	Spring washer	4
33	Support bar	1	73	Washer	1
34	Support arm	1	74	Second belt wheel	1
35	Pressure plate for workpiece	1	75	Thirdly belt wheel	1
36	Screw	1	76	Nut	1
37	Knob	1	77	First belt wheel	1
38	Thumbscrew	2	78	Washer	3
39	Bevel pointer	1	79	Bearing pressure plate	1
40	Bracket	1	80	Bearing	3

NO	DESCRIPTION	Q'TY	NO	DESCRIPTION	Q'TY
81	Hexagon socket screw	1	115	Moving guard centre plate	1
82	Washer	1	116	Moving guard	1
83	Fourthly belt wheel	1	117	Fixed washer	1
84	Bearing	2	118	Guide wheel	1
85	Flat key	2	119	Guide bushing	1
86	Spindle of belt	1	120	Torsion spring	1
87	Bush	1	121	Screw	2
88	Fixed guard	1	122	Moving guard fixed plate	1
89	Toothed washer	1	123	Flat key	1
90	Spring washer	3	124	Output spindle	1
91	Screw	1	125	Circlip	1
92	Cable lock cover	1	126	Spacer	1
93	Washer	2	127	Blade flange	2
94	Screw	2	128	Blade	1
95	Rotor	1	129	Bush of blade	1
96	Screw	2	130	Blade bolt and washer	1
97	Stator	1	131	Screw	7
98	Wire	1	132	Lower handle	1
99	Bearing	1	133	Spring	1
100	Motor housing	1	134	Switch	1
101	Locking pin cap	1	135	Trigger	1
102	Brush holder	2	136	Upper handle	1
103	Carbon brush	2	137	Screw	1
104	Cap of carbon brush	2	138	Carry handle	1
105	Motor cover	1	139	Screw	2
106	Screw	2	140	Screw	1
107	Spring	1	141	Cable and plug	1
108	Circlip	1	142	Protector for cable	2
109	Spindle lock	1	143	Clamp	1
110	Linkage	1	144	Washer	1
111	Washer	1	145	Spanner	1
112	Screw	1	146	Dust bag	1
113	Screw	1	147	Side bars	2
114	Rivet	3	148	Baffle	1